



Rochester Schools Modernization Program

A photograph of a large, multi-story school building with many windows, set against a clear blue sky. The building is partially obscured by trees in the foreground. The image is faded to serve as a background for the title text.

ROCHESTER JOINT SCHOOLS CONSTRUCTION BOARD

FY 2016-2017

ANNUAL REPORT

Allen Williams, Chairman
Michael Schmidt, Vice Chairman
Charles Benincasa, Treasurer
Bob Brown
Ineabelle G. Cruz
Norman Jones
Thomas Richards
Brian Sanvidge, ICO

Table of Contents

Introduction	2
History and Background	4
A Timeline History of the RSMP	8
RSMP Organizational Chart	9
Architect and Construction Manager Project Assignments	10
The 2016-17 Fiscal Year in Review	11
Phase 2 Updates & Summaries	12
Business Opportunity Program	14
Diversity Plan	16
Program Highlights	18
Going Forward 2017-18	19
Equal Opportunity	19
The Role of the Independent Compliance Officer Consultant Firm	20
RJSCB Meetings	21
Appendix A – Table of Professional Service Firms and Contractors	22
Appendix B – Swing Space Allocations Going Forward	27
Appendix C – Table of Estimated Construction Costs and Anticipated State Aid	28
Appendix D – Table of Debt Service vs. Anticipated State Aid Reimbursement	29
Appendix E – Geographic Display of Workforce	31
Appendix F – Table of M/W/S/DBE Subcontractor Firms	33

Introduction

The Rochester City School District (RCSD or District) has a demonstrated, twenty-year commitment to providing regular maintenance to its schools. This commitment, however, has been hampered by limits in borrowing and the capacity to take on additional debt service. While the buildings have been maintained, they are in need of updates to bring the learning environment into the 21st century and provide students with facilities that are comparable to neighboring districts.

The RCSD occupies fifty school buildings. Nearly half are more than 75 years old. Given the number and overall age of the buildings in the inventory, there is a constant demand for building repair and upgrading. The RCSD does not have any buildings that have dangerous conditions; however, given the nature and use of the buildings it still must maintain a constant emphasis on long-term building maintenance.

In addition to maintenance it is also important that the instructional demands of the District's school programs are met. These demands include maintaining low class sizes, providing Pre-Kindergarten classrooms, creating labs for computers and other technologies, expanding Special Education rooms, and providing space for school-based health centers and Student and Family Support Centers. All of these measures help to improve the overall delivery of a quality instructional program and a quality learning environment.

The Rochester Schools Modernization Program (RSMP) was created by New York State Legislation in 2007 in order to provide the City of Rochester (City) and the RCSD with increased flexibility to meet the needs of its school children by providing alternative financing mechanisms for multi-phase, multi-year projects, collectively known as the RSMP.

Phase I authorized \$325 million total funding, with \$239 million in estimated "hard" construction expenses and \$86 million in design, management, financing, and other "soft" incidental program expenses. Phase II is far more aggressive, with \$435 million in funding for renovations of up to 26 schools. The \$435 million includes \$297 million in estimated "hard" construction expenses and \$137 million in design, management, technology implementation, financing, and other "soft" incidental program expenses. With Phases III and IV, the RSMP is expected to span two decades, total approximately \$1.3 billion, and be the largest public works project in Rochester's history.

The Legislation also created the Rochester Joint Schools Construction Board (RJSCB or Board) and designated the RJSCB as agent for the City and the District to undertake the RSMP projects on their behalf. The City's Finance Director is currently the Treasurer of the RJSCB. The RJSCB Chair meets with District's Senior Leadership team on a monthly basis. In addition, the District has appointed its Director of Operations as a member of the RJSCB.

The powers granted to the RJSCB enable a more efficient approach to the reconstruction and rehabilitation of the District's educational facilities. The Legislation was sponsored by members of Rochester's local delegation and approved unanimously in both houses of the New York State Legislature.

In 2010 the RJSCB hired a Program Manager, Gilbane Building Company (Gilbane) along with its partner, Savin Engineers P.C. (Savin), to implement Phase 1 of the RSMP. The first task of the Gilbane/Savin team was to establish a Master Plan for Phase 1 using the criteria set forth by the District.

Beginning in the summer of 2010, Gilbane/Savin and SWBR Architects created the Phase 1 Master Plan for the RSMP. The Phase 1 Master Plan identified twelve school projects and a technology project (District Wide Technology or DWT) to be included in Phase 1 of the RSMP. The Phase 1 Master Plan was subsequently approved by the Board of Education and the State Education Department in 2011.

The Phase 1 Master Plan represents conceptual ideas on how the District's overall strategy can be implemented. The specific project designs are accomplished by those individual architects hired for each project. The Phase 1 Master Plan provides the District with flexibility to meet changing needs. This was evidenced by the District's decision during Phase 1 to add full building air conditioning to five projects, add the renovation of the Franklin Auditorium, and add a synthetic turf field at East High School. In order to accomplish these additional scope items, with the consent of the RCSD, funding was transferred from one of the original projects listed in the Phase 1 Master Plan, the Jefferson High School Project.

Rochester Joint Schools Construction Board Annual Report Fiscal Year 2016-17

Also in 2011, the RJSCB officially selected the County of Monroe Industrial Development Agency (COMIDA) as the source to provide the bond funds necessary to carry out the program. The bonds will be paid by State Aid reimbursements up to a certain percentage, the balance of which is the local share. In 2012, a Project Labor Agreement (PLA) was negotiated with the Rochester Building and Construction Trades Council for use during the RSMP Phase 1.

Construction began on schedule in the summer of 2012. Enrico Fermi School 17, Helen Barrett Montgomery School 50, Charlotte High School and Franklin High School were the first projects to break ground in July 2012 followed by The World of Inquiry School 58 in October 2012 (a two-year project).

The second group of projects broke ground in 2013, including: Henry Hudson School 28, John Williams School 5, East High School, and the Edison Technology Campus.

In May 2016, Phase 1 was in the final stages of completion. James P.B. Duffy students returned home for the start of the 2016-2017 academic year. James Monroe High School transitioned from its Phase 1 project directly into a Phase 2 project scheduled for completion in summer 2018.

Overall, the Phase 1 program was a tremendous success on many levels. All of the individual project scopes were completed within the \$325 million stipulated in the Legislation and within the local share amount authorized by the Board of Education. All of the Phase 1 projects were coordinated with surrounding City improvement efforts, neighborhood group concerns, and recommendations from school administration, staff, and parent groups, resulting in 21st century teaching and learning environments for the students and overall improvement to the surrounding community.

In addition, the RJSCB has been successful in meeting its diversity goals for both business utilization and workforce participation in Phase 1, having attained:

- ✓ \$83 million in minority, women, small and disadvantaged business contracts (approximately 29% of the overall construction dollars)
- ✓ 550,000+ hours worked by minority and women workers, more than 30% of the total hours worked for the entire program.

In December 2014, the Governor of the State of New York signed the Legislation for Phase 2 of the RSMP. Following a nation-wide Request for Proposals (RFP) selection process, in December of 2015 the RJSCB hired Savin as the Program Manager for Phase 2 of the RSMP. Savin, an MBE firm, took the lead role on the program after having been a part of the Program Management team in Phase 1 working under Gilbane. Gilbane is working as a partner under Savin for Phase 2. Phase 2 is well underway with 13 out of 14 identified projects either under construction or in design. Additional details are included later in this report.



History and Background of the RJSCB and the RSMP

Formed in the fall of 2008, the RJSCB comprises three members appointed by the RCSD Superintendent of Schools and three appointed by the City of Rochester Mayor. The seventh member is jointly appointed by the Superintendent and the Mayor. The RJSCB's Independent Compliance Officer (ICO) is a non-voting member hired by the Board. *(Pictured above clockwise from top left are 2016-17 Board Chairman Allen Williams, Board Vice Chairman Michael Schmidt, Board Treasurer Charles Benincasa, Member Bob Brown, Member Ineabelle G. "Geena" Cruz, Member Norman Jones, Member Thomas Richards and ICO Brian Sanvidge.)*

Following two orientation sessions in late fall 2008, the RJSCB initiated its official proceedings in January 2009. The RJSCB began by completing a number of foundational tasks. Among those initial accomplishments were: adoption of RJSCB Bylaws, election of Officers, and the establishment of a committee system. In August of 2009, following an extensive Request for Proposals search and interview process, the RJSCB identified its general counsel.

In January of 2010 a Cooperative Agreement among the RCSD, the City, and the RJSCB established the relationships and the roles and responsibilities of each party as it relates to the RSMP. The Cooperative Agreement confirms that the City shall not be obligated, directly or indirectly, to provide funding for the projects; to provide payment for debt service on any bond or notes; or any other obligations including, specifically, any local share obligation related to the RSMP. Also in 2010, the RJSCB established policies covering ethics, responsibilities, procurement, and communications. In addition, the RJSCB selected its Financial Advisor and its Bond Underwriter for Phase 1 of the RSMP, selected a firm to provide an energy efficiency study, and identified its Independent Compliance Officer ("ICO") following an extensive RFP search and interview process.

In the summer of 2010 the RJSCB hired its Program Manager, Gilbane, along with its partner Savin, to implement the RSMP. The first task of the Gilbane/Savin team was to establish a Master Plan for Phase 1 of the RSMP using the criteria set forth by the District.

Working with the ICO and the Program Manager, the RJSCB established a Preliminary Diversity Plan for the program that established the Minority and Women Business Utilization goals and Work Force Participation (EEO) goals for the program.

Rochester Joint Schools Construction Board Annual Report Fiscal Year 2016-17

(The goals and current RSMP participation are discussed later in the MBE/WBE/SBE/DBE Business Utilization and EEO Compliance section of this report.)

The RJSCB engaged the services of a consulting firm to assist the Board with State Environmental Quality Review Act (SEQRA) documentation for the RSMP. The Board acted as the lead agent for the assessment. In March of 2011, the RJSCB determined that the Phase 1 projects would not result in significant adverse environmental impacts. The Negative Declaration was distributed by the RJSCB to all interested and involved parties.

Beginning in the summer of 2010, Gilbane/Savin, along with a team of other firms, created the Phase 1 Master Plan for the RSMP. In addition to repairs to the physical components of each facility such as the mechanical systems, the building infrastructure, and the classrooms, the Phase 1 Master Plan became the road map for implementing the District's educational plans for the future. The Phase 1 Master Plan ultimately identified twelve school projects and a technology project (District Wide Technology or DWT) to be included in Phase 1 of the RSMP. The RJSCB conducted seven public meetings in September, October, and December 2010 for the purpose of seeking public comment and incorporating said comments into the draft Phase 1 Master Plan. The Phase 1 Master Plan was subsequently approved by the Board of Education and the State Education Department in 2011.

In the spring of 2011, the RJSCB selected the Architects for the first group of six school projects (Phase 1a). Those school projects included: School 17, School 28, School 50, School 58, Charlotte High School, and Franklin High School. (See Appendix A - Table of Professional Service Firms.)

The RJSCB hired a Technology Consultant to develop the District-Wide Technology (DWT) project, to act as the single point of contact for all technology related components that are a part of the RSMP, and to provide seamless technology integration in all schools, while also adhering to technology standards as set forth by the District. (See Appendix A - Table of Professional Service Firms)

The RJSCB also engaged a food services consultant for the RSMP to ensure a site-based food service delivery system that complements the operations of the District's food service department and central kitchen. (See Appendix A - Table of Professional Service Firms.)

In the summer of 2011, the RJSCB hired Construction Managers for the 1a projects, to help plan the logistics and to implement the construction. (See Appendix A - Table of Professional Service Firms.)

In the fall of 2011, the next group of Architects was selected by the RJSCB to plan and design the second group of projects (Phase 1b). Those school projects included: School 5, School 12, Monroe High School, East High School, and the Edison Technology Campus. Construction Managers were later selected in 2012 to plan and implement the construction of these projects. (See Appendix A - Table of Professional Service Firms.)

The first four projects were bid in the spring of 2012 and began construction in July 2012. School 17, School 50, Franklin High School, and Charlotte High School were completed in the summer of 2013. School 58, a two-year project, was also bid in 2012. Construction started in the fall of 2012 and was completed in December of 2014.

The second group of projects was bid in 2013 and began construction in the summer of 2013. Those projects included: School 5, School 28, East High School, and the Edison Technology Campus. These projects were all completed in the summer of 2014. Jefferson High School was bid in 2014 and completed in summer 2014.

The final two projects, called the 1c projects, were School 12 and Monroe High School. School 12 students returned to their building in September 2016. Monroe High School construction proceeded seamlessly into Phase 2 in 2016.

The RJSCB is committed to ensuring that the projects in Phases 1 and 2 support the educational objectives for students by assuring that building stakeholders have an active voice in the design process. The RJSCB is also committed to ensuring that neighborhood stakeholders have a voice in the design process. The Building Advisory Committees (BACs) have been established for each school project through the cooperation of the Program Manager, the Architects, and the building Principals. The BACs include participation from District parents, students and staff, City of Rochester representatives, and neighborhood stakeholders.

Rochester Joint Schools Construction Board Annual Report Fiscal Year 2016-17

Immediately following the selection of Savin as the Program Manager for Phase 2 a tremendous effort to complete the Master Plan for Phase 2 was put forth in order to avoid a gap between Phase 1 and Phase 2. The RJSCB had previously engaged the services of the Phase 1 Master Plan Architect, SWBR Architects, to work with the Program Manager and the District. The RSMP team worked closely with the District to determine the infrastructure needs of each building and how to fit the District's "model program" into each facility. The District's desire to eliminate transportable classrooms, basement classrooms, and substandard teaching/learning spaces remains as a core principle for Phase 2. Through the Phase 2 Master Plan, the District also continues its strategy to "right-size" the current seating capacity throughout the District at each grade level as compared to the five- and ten-year enrollment projections.

A series of public meetings was held throughout the months of January, February, and March 2016 where the Phase 2 Master Plan was discussed, leading up to the Board of Education approval of the Phase 2 Master Plan on March 24, 2016.

In parallel to the planning work taking place on the Phase 2 Master Plan, the RJSCB engaged a SEQRA consultant, a Financial Advisor and a Bond Underwriter to support those efforts. The financial plan, based on the projects selected by the Board of Education in the Phase 2 Master Plan, was completed and approved by the Board of Education in April 2016. The financial plan is contingent upon the District receiving relief on the Maximum Cost Allowance (MCA) for several of the projects identified in Phase 2.

The MCA formula limits State Aid for all school building projects through a process prescribed by New York State Education Law Section 3602. The formula to calculate aid allowances was originally issued by the NYSED Office of Facilities Planning and is updated occasionally to reflect regional cost factors. One of the biggest Phase 1 "lessons learned" is that traditional Maximum Cost Allowance (MCA) requirements established by NYSED are inefficient when applied to whole-school renovation projects. Although the law does not set a time limit on the use of MCA for a project, in recent years NYSED has limited districts to a five-year cycle. Under this rule, if the Commissioner of Education approves a project that utilizes a District's full MCA, he or she will not approve another project for that school until five years have passed.

Many of Rochester's aging schools require "gut-level" renovation. That means new mechanical, electrical, and plumbing systems to meet current standards, plus replacement of wood structural components with modern materials, along with the technology and cosmetic changes that make old buildings look new. Under standard MCA limits, projects of this magnitude must be completed in multiple phases. This is far more costly and less efficient than a single phase of construction.

The special legislation that was introduced in April 2016, with the support of local elected officials in both the Assembly and the Senate, gave the District the financial aid that it needs to allow for the Phase 2 projects to be done in one phase of construction rather than having to do partial projects, wait five years for the MCA to reset, and then come back to complete the project.

The special legislation was also consistent with the goals of the initial authorizing legislation for the Facilities Modernization Program. The special legislation will not just benefit the four schools currently in swing space (Monroe High School, Abraham Lincoln School 22, The Children's School of Rochester School 15, and John Walton Spencer School 16) or the additional schools slated for renovation in Phase 2. It will benefit the entire Rochester community through more construction jobs, more families and staff members benefiting from modernized schools, and more efficient use of taxpayer dollars.

The special legislation was approved by the New York State Senate on June 6, 2016 followed by the New York State Assembly on June 16, 2016. The Governor signed the bill into law later that month.

The RJSCB also updated its Diversity Plan for Phase 2. This updated plan increases the business utilization goal by 6% and the workforce participation goal by 3% over the Phase 1 Diversity Plan. It also includes the implementation of an initiative called the Business Opportunities Program (BOP). The BOP includes a series of training programs that are supported by mentor/protégé relationships to help minority, women, small, and disadvantaged businesses participate in the RSMP. The objective is to provide education and hands-on training to underserved and underprivileged business entrepreneurs in order to build capacity in the City and the surrounding area.

The BOP consists of a series of training classes and presentations along with the opportunity to participate in a Mentor/Protégé relationship with Prime Contractors and Construction Managers (CMs). There are also networking events that include CMs, General Contractors and other prime contractors to support minority, women, small, and disadvantaged businesses' relationship building efforts.

Rochester Joint Schools Construction Board Annual Report Fiscal Year 2016-17

The BOP also helps to address financing and cash flow needs through a Revolving Loan Program (RLP) to help minority, women, small, and disadvantaged contractors address the challenges that small businesses have in funding initial expenses, payroll, and mobilization costs relating to RSMP contracts.

The Phase 2 Master Plan, the corresponding Financial Plan, and the Diversity Plan were provided to NYSED and to the New York State Comptroller for review and approval. In parallel, the first project in Phase 2, Monroe High School, has successfully segued from Phase 1 and Phase 2 construction is underway.

Initial Phase 2 funding of \$2.7 million was provided by the RCSD through May 2016. Through a Municipal Agreement, the City committed to providing the program with Bond Anticipation Note (BAN) financing in August 2016. The City BAN is funding the continued design, planning, and initial construction of Monroe High School, as well as the design of the other Phase 2 projects. The first bond sale is scheduled for August of 2017.

Throughout the remainder of 2016, the RSJCB engaged the services of the other design consultants and professional services firms necessary to implement the Phase 2 program, including: Legal Services, Independent Compliance Officer, Architects, Construction Managers, Inspection and Testing Services, Commissioning Consultants, Environmental Consultants, Site Security Consultants, Food Service Consultants, and Contractors.

The Building Advisory Committee (BAC) process was widely praised as a success in Phase 1 and has continued in Phase 2. The process of establishing a BAC for each school project through the cooperation of the Architect, the Program Manager and the building Principals began early in each Phase 2 project. The BACs again include participation from District parents, students and staff, City representatives, and the neighborhood stakeholders unique to each project.

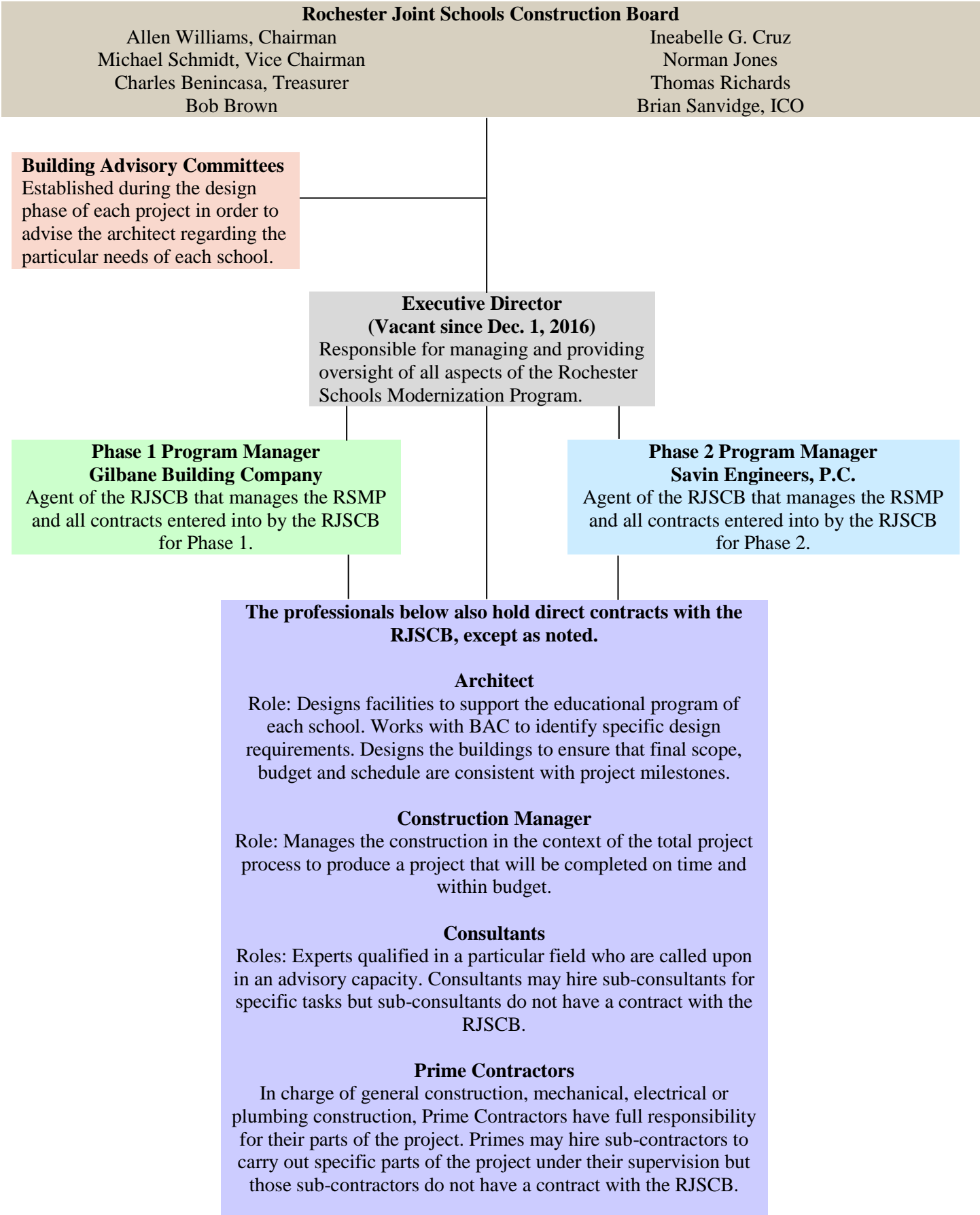
Category:	RJSCB Business Utilization Program Goals, Phase 1		RJSCB Business Utilization Program Goals, Phase 2	
	Goal	Achievement	Goal	Achievement
MBE	15%	15.68%	17%	43%
WBE	5%	7.48%	10%	15%
SBE	5%	3.74	3%	2.6%
DBE	2%	2.23%	3%	1%
TOTAL	27%	29.13%	33%	61.6%

Category	RJSCB Workforce Participation Goals, Phase 1		RJSCB Workforce Participation Goals, Phase 2	
	Goal	Achievement	Goal	Achievement
Minorities	20%	22.93%	22%	37.74%
Females	6.9%	7.33%	8%	10.57%
Total	26.9%	30.26%	30%	48.31%

A Brief History of the RSMP

<p style="text-align: center;">2008-09</p> <ul style="list-style-type: none">• RJSCB Formed• Bylaws Adopted• Committee System Established• General Counsel Selected	
<p style="text-align: center;">2010-2011</p> <ul style="list-style-type: none">• Master Plan Approved by RCSD Board of Education• Professional Service Firms Selected:<ul style="list-style-type: none">• Architects (Phase 1a and 1b)• District-Wide Technology• Food Services• Construction Managers (Phase 1a)	<p style="text-align: center;">2009-2010:</p> <ul style="list-style-type: none">• Cooperative Agreement Formalized• Phase 1 Program Manager Selected• Diversity Goals Established• SEQRA Process Begun• Master Plan Developed
<p style="text-align: center;">2012-2013</p> <ul style="list-style-type: none">• Work begins on Schools 5, 28, East and Edison High Schools• Work Completed on Schools 17, 50, Franklin and Charlotte High Schools	<p style="text-align: center;">2011-2012</p> <ul style="list-style-type: none">• Phase 1b Construction Managers Selected• Work begins on Schools 17, 50, 58, Franklin and Charlotte High Schools
<p style="text-align: center;">2014-15</p> <ul style="list-style-type: none">• Multi-year work begins on School 12 and Monroe High School• Initial planning begins for Phase 2, including new enabling legislation	<p style="text-align: center;">2013-14</p> <ul style="list-style-type: none">• Work Completed on Schools 5, 28, East, Edison and Jefferson High Schools
<p style="text-align: center;">2016-2017</p> <ul style="list-style-type: none">• Business Opportunities Program debuts• Work continues at Monroe High School• Professional Services firms selected for 13 Phase 2a-2c schools• Construction begins at Schools 7, 16, 1/15, School Without Walls, the Dr. Freddie Thomas Learning Center, East and Edison highschools• Design work begins at Schools 2, 4, 6 and 10.	<p style="text-align: center;">2015-16</p> <ul style="list-style-type: none">• July 2016: Phase 2 Enabling Legislation signed into law by Governor• Phase 2 Program Manager selected• Phase 2 projects identified and scheduled into four <u>subphases</u>: 2a, 2b, 2c, 2d

RSMP Organizational Chart



Individual Project Architect and Construction Manager Assignments Phase 1

School Project	Architect	Construction Manager
School 5	Young + Wright Architectural	The Pike Company
School 12	SEI Design Group	The Pike Company
School 17	SWBR Architects	The Pike Company
School 28	LaBella Associates	LeChase Construction
School 50	Clark Patterson Lee	The Pike Company
School 58	JCJ Architecture	LeChase Construction
Charlotte High School	CJS Architects	Campus Construction Group
Franklin High School	Young + Wright Architectural	Campus Construction Group
East High School	Cannon Design	LPCiminelli, Inc.
Edison High School	LaBella Associates	LPCiminelli, Inc.
Monroe High School	CJS Architects	Campus Construction Group
Jefferson High School	SEI Design Group	n/a

Individual Project Architect and Construction Manager Assignments Phase 2 to date

School Project	Architect	Construction Manager
Monroe High School	CJS Architects	The Pike Company
School 7	SEI Design Group	LeChase Construction
School 16	SWBR Architects	LPCiminelli, Inc.
East High School	Cannon Design	The Pike Company
Dr. Freddie Thomas	Watts Architecture & Engineering	The Pike Company
School Without Walls	Clark Patterson Lee	The Pike Company
School 1/15	Moody Nolan	The Pike Company
Edison High School	LaBella Associates	LPCiminelli, Inc.
School 4	CJS Architects	DiMarco Constructors
School 2	Clark Patterson Lee	The Pike Company
School 6	Moody Nolan	LPCiminelli
School 10	SEI Design Group	LeChase Construction

2016-2017 Year in Review

Legislation:

The Rochester School Facilities Modernization Program Act, constituting Chapter 416 of the 2007 Laws of New York and Chapter 533 of the 2014 Laws of New York (collectively the “Rochester Schools Act”), established the Rochester Joint Schools Construction Board (RJSCB or Board).

The RJSCB, under Section 10 of the Rochester Schools Act, is required to retain the services of an Independent Program Manager to implement Phase II of the Program. In December 2015, the RJSCB selected Savin Engineers, P.C. a New York professional corporation, as its independent program manager (the Program Manager).

The RJSCB, pursuant to the Rochester Schools Act, is also required to retain the services of an Independent Compliance Officer/firm (the ICO) to assist the Board with compliance monitoring, data tracking and verification, reporting and community outreach services. In October 2016, the RJSCB retained the firm Baker Tilly Virchow Krause as ICO to examine and monitor the implementation of the RSMP Phase II Diversity Plan, and to collect and review monthly data, to determine whether diversity workforce and business goals are being met each month and at completion of the Phase II program. Professional service firms and contractors are required to submit RSMP forms or certified payroll transcripts that summarize the workforce breakdown in terms of race and gender.

In July 2016, the Governor of the State of New York signed an amendment to the Phase 2 legislation (Chapter 92 of the Laws of 2016) authorizing two multi-year cost allowances in a five-year period for eight Phase 2 projects for the computation of Building Aid.

Financing:

The Rochester Schools Act requires the RJSCB and the District to compare the financing available for the RSMP through the County of Monroe Industrial Development Agency (COMIDA) with the financing available through the Dormitory Authority of the State of New York (DASNY), and employ the financing mechanism that will result in the lowest cost to taxpayers of the City and State.

The RJSCB requested that COMIDA provide financing for the Phase II Program and adopted a resolution in December 2016 authorizing the issuance of up to \$435 million in tax-exempt bonds to accomplish the purposes of the Rochester Schools Act.

COMIDA has previously issued all tax-exempt bonds for the RSMP on behalf of the City, the School District and the RJSCB, for the Phase I projects authorized under the Rochester Schools Act, and is expected to issue tax-exempt bonds for the Phase II projects as well.

Two public hearings were held by COMIDA in November and December 2016 concerning the issuance of the tax-exempt bonds for the Phase II projects.

The cash flow estimates provided by the Program Manager for Phase II suggest three tranches of RSMP Phase II COMIDA Tax-Exempt bond financing. (*A tranche is one part or division of a larger unit.*)

- Tranche 1: 2017 Series (combining 2017A and 2017B series) for \$150 million to finance expenses until the 2nd quarter of 2018;
- Tranche 2: 2018 Series for \$225 million to finance expenses from 3rd quarter 2018 to fourth quarter 2019; and
- Tranche 3: 2020 Series for \$60 million to finance expenses from first quarter of 2020 to end of the program.

The 2017 Series 1 Bonds are expected to pay out the \$32M City BAN, finance all of Phase 2a design and construction that have been granted NYSED approval (including a roofing project at East High School), the design and construction of the 2b projects, and early planning of the 2c and 2d projects.

SEQRA:

The RJSCB declared its intent to serve as State Environmental Quality Review Act (SEQRA) Lead Agency for the Phase II Master Plan in February 2016 and subsequently confirmed its Lead Agency status in March 2016.

The RJSCB, through its SEQRA consultant, has conferred with the New York State Office of Parks, Recreation and Historic Preservation (SHPO) and with other involved or interested agencies to provide reasons supporting the SEQRA Negative Declaration, and determined that the Action, as proposed, will not result in any significant adverse environmental impacts. In addition, the RJSCB has incorporated comments and correspondence received from involved and interested agencies to identify potentially significant adverse impacts in this Type 1 Action that needed implementation of mitigation measures. Determination of significance for the Phase 2 SEQRA process was completed in June 2016.

Phase 2 Updates & Summaries

Monroe High School Phase 2a/2b

Construction contracts for Phase 2a were awarded in December 2016. Construction started in January 2017 and is ongoing. Demolition of the existing School 15 and the existing Cafeteria began in June 2017, and Phase 2b design documents are being packaged for NYSED submission and approval.

East High School Phase 2a

An early roof project has been submitted to NYSED and is scheduled for Summer 2017. In support of the University of Rochester's program changes at East High School, the Phase 2 scope of work has been established as a balance between infrastructure needs and program needs in order to keep this project within the specific Phase 2 Master Plan budget. It is recognized that significant additional Program and Work Scope that are not in Phase 2 must defer to a future Phase 3.

Virgil Grissom School 7 Phase 2a

School 7 is undergoing a complete gut-renovation. Through the RSMP, the building will receive air conditioning and a new classroom addition. The early demolition and abatement package was approved by NYSED and awarded by the RJSCB in January 2017. Work began in February 2017 and is continuing on schedule. The main project was bid and awarded in May 2017. Students and staff will return to the building in September 2018.

John Walton Spencer School 16 Phase 2a

Extensive community input was gathered from neighbors prior to the final design selection for School 16; nearly 20 design concepts were drawn before consensus was reached to include a new gymnasium addition (not originally planned), a classroom addition, an enlarged Library/Media Center, and an enlarged kitchen. At School 16, demolition and abatement began April 24, 2017. Design Documents for the main project have been developed with an expected NYSED submission in late June 2017. Students and staff will return from their swing space location for the 2018-19 school year.

School Without Walls Commencement Academy Phase 2b

The project at SWW includes a gymnasium, new digital art and studio art classrooms, two new science labs, site work for the parking lot and sidewalks, roof work, new windows, interior renovations and infrastructure updates. Construction Documents are being reviewed by NYSED, with construction to begin Summer 2017.

School 1/15 Phase 2b

The former School 1 will undergo a complete gut renovation and modernization in preparation to become the home of The Children's School of Rochester. Plans include a new classroom addition, a dedicated parent drop-off area/entrance, a new bus loop, and other site improvements. In addition, the current transportable classrooms will be removed. The early demolition and site package was reviewed with NYSED and is out to bid. Construction will start the Summer 2017. School 15 students and staff will move into the building in late August 2018.

Dr. Freddie Thomas Learning Center Phase 2b

The RJSCB showcased its flexibility through a major scope change requested by the RCSD in the spring of 2017. The project originally included only a new Main Office and playground and any ‘make ready’ work required to welcome students from Nathaniel Hawthorne School 25 to their new home at Dr. Freddie Thomas. The allocated \$4 million in funding, per the RCSD and RCSD Board of Education, will now focus on replacement of the chiller plant and pool filtration system. Any remaining funds will be used to make Dr. Freddie Thomas ready to welcome School 25 in September 2018. However, the Main Office will be renovated as planned beginning in the Summer of 2017.

Edison Career & Technology High School Phase 2b

The Edison project includes a complete interior and exterior renovation at the southwest corner of the building (housing the former auto repair and wood working programs), roof work, structural reinforcement, and classroom renovations. Site testing work has already begun, with construction beginning in the Summer of 2017.

Phase 2c:

Architects and construction managers have been hired for the 2c schools, which include George Mather Forbes School 4, Clara Barton School 2, Dag Hammarskjold School 6 (to become the new home of Abraham Lincoln School 22), and the Dr. Walter Academy School 10. Construction work on those projects is expected to begin in 2018.

Phase 2d:

The General E.S. Otis School 30 is the only Phase 2d school project. Work on that project is expected to begin mid-2019 and extend into 2020.

Business Opportunity Program

The Business Opportunity Program (BOP) has been implemented to increase the number of certified M/W/D/SBEs capable of participating successfully on a variety of construction projects, and improve the general business owner's management, organization and skills by exposing and teaching them strategic tools to enhance the structure and growth of their company. The BOP is comprised of three components that have been developed in the first year to reach Program initiatives:

1) Instructional Series

With an open door policy welcoming entrepreneurial startups, sole proprietorships or small multiple employee companies, BOP's Instructional Series (IS) is a free, unique learning resource that has utilized seasoned professionals from various companies contracted with the RJSCB to serve as instructors. The curriculum consists of seven modules, conducted two evenings weekly over four months and covers topics relevant to a wide range of areas affecting business operations, finances, project management and marketing.

The first cycle began in August 2016 and of the initial 18 firms that enrolled, 13 of them met the minimum 75% attendance threshold and received a Certificate of Completion at a ceremony held at RSMP on January 11, 2017. Since then, six of the 13 graduates have successfully secured contracts or subcontracts as participants in Phase 2.

The second (current) cycle began in February 2017 and after its final session on June 21, it will be capped off with a Completion Ceremony held at RSMP's headquarters on July 19. There are five businesses currently enrolled and their consistent attendance to date suggests they will qualify for Certificates of Completion.

As indicated by evaluation surveys filled out by all participants, the overall impression of the IS's value and benefits is favorable. Aggressive recruitment for participants in the third cycle, which begins August 2017, are diligently underway.

2) Mentor-Protégé Program

The Mentor-Protégé Program (MPP) facilitates training and mentoring in a direct, engaging and practical manner intended to produce long term positive impacts. It has been designed to motivate and encourage all holders of prime contracts with the RJSCB to provide mutually beneficial developmental assistance to local Eligible Business Enterprises (EBEs) to enable such emerging businesses to 'learn the ropes' from more experienced businesses. It is providing a dynamic opportunity for the emerging EBE Protégé to overcome barriers that typically inhibit or restrict the success of its business initiative. It also encourages professional service firms and prime contractors as Mentors, to enhance the business, management and technical capabilities of the Protégé. In order to be eligible to participate in the MPP as a Protégé, a business must:

- a) successfully complete the BOP's Instructional Series, or
- b) have a prime or subcontract on one of the RSMP projects.

The Mentor/Protégé relationship lasts from six months to a year. This allows the EBE to meaningfully benefit from the knowledge and time-tested experience of the mentor firms and for the program to support as many Mentor/Protégé relationships as possible. A modest allowance has been included in the Primes' contracts to serve as reasonable reimbursement for their time and resources contributed as Mentors to MPP.

After the first cohort of the IS completed their semester, they were given the opportunity to sign up for the MPP as inaugural participants. Professional service firms were selected as Mentor matches for the seven IS graduates who requested further assistance. The pairings were based on the graduates' areas of need that they have specified and for which BOP Administrators have confirmed the Mentor has the counseling resources and/or capacity to provide tailored assistance.

In January 2017, BOP Administration completed its review of DP-1 utilization plans submitted from prime contractors for the Monroe High School 2a project and made recommendations for initial pairing relationships. Three EBE subcontractors have been paired with respective Mentors and to date the pairings have demonstrated productive value.

A developmental plan serves as the template for identifying each pairing's mutually agreed upon objective goals and duration. Periodic evaluation surveys submitted by both parties provide progress metrics. As future Phase 2 projects

mobilize and more IS graduating cohorts complete their semesters, the pool of MPP participants will exponentially grow during 2017-2018.

Revolving Loan Program

As a reflection of the RJSCB's effort to remove barriers and promote business growth, a Revolving Loan Program (RLP) has been designed to help Eligible Business Enterprises (EBEs) meet their short-term working capital needs on RSMP projects. With access to a disbursement maximum of \$10,000 per occurrence, a loan can be used to finance the direct costs of performing under a contract with the RJSCB with regard to payroll, supplies, equipment and other overhead.

To accommodate making the loan process easy to implement and navigate and disburse, an RLP short form application has been created that can be reviewed by the RLP Committee for approval within 3 business days. To help incentivize utilization by qualified EBEs, there are no credit checks and zero (0%) interest applied with only a minimal administrative fee. The fund's revolving balance is secured by a replenishment system based on monthly payment requisitions that require the loan to be repaid within 90 days.

BOP has built and manages an electronic file for Building Advisory Committees (BACs) for each Phase 2 school project. This will facilitate efficient coordination of communications regarding project developments and progress.

3) Marketing Outreach

Website

In May 2017, BOP unveiled the new Program website: www.rsmpnews.net The new site provides an immersive view of the Program that is designed to keep visitors up to date with Phase 2 developments involving projects, bids, RFPs and other important information.

Approved resolutions, procurement awards, monthly meetings and other decisions the RJSCB engage in are posted in addition to programmatic documentation such as the Strategic Plan, Diversity Plan, Annual Reports and SEQRA studies. The site serves as the primary source for information about the BOP. Additionally, project portfolios featuring schools completed in Phase 1 are displayed.

Newsletter

The BOP is producing a comprehensive quarterly newsletter, RSMP News, to detail Program progress, relevant activities and significant events. The publication is distributed using a database listing of community stakeholders, parents, faculty, RCSD and City Hall representatives, BAC members, industry service professionals, churches, primes and subcontractors. The newsletter is also posted to the RSMPNews.net website. To date, two editions have been created and dispersed by e-blast and delivery at designated pulse points throughout the City.

Networking Events

At the end of each cycle of the Instructional Series, the BOP will sponsor a networking event providing IS graduating participants and other EBE's an opportunity to engage with instructors, primes and fellow peers. For subcontractor IS graduates, this will be an opportunity for them to engage with prime contractors and other industry leaders who could become contacts to help generate new business opportunities.

Media

The breadth of the RSMP encompasses a large audience, making dissemination of timely and accurate information a priority. The BOP has played a catalyst role initiating the distribution of that information. Various forms of media outlets are being targeted including: television, newspapers, social media and radio. Broad, proactive coverage of profile-building developments is part of the pre-emptive strategy to mitigate and overcome negative press and unexpected crisis developments.

The Program Manager has retained LandNPR as a consultant specifically charged with assisting the coordination and execution of RSMP Outreach and Marketing initiatives. Additionally, La'Lew Public Relations assists LandNPR, specifically handling matters regarding the news media and RSMP social media communications.

During the past year, the BOP was able to generate RSMP press coverage that included newspaper articles, radio interview broadcasts and appearances at public events.

Diversity Plan Compliance

Phase 2 Business Utilization (through April 2017)

Area	Goals	Achievement
MBE	17%	43%
WBE	10%	15%
SBE	3%	2.6%
DBE	3%	1%

Total Contract Value to date = \$59,869,210

MBE Firms = \$25,604,955 (42.76%)

WBE Firms = \$9,237,602 (15.43%)

SBE Firms = \$1,555,162 (2.6%)

DBE Firms = 596,211 (596,211 (1%))

TOTAL Eligible Business Enterprise (EBE) Contract Values: \$36,993,930

TOTAL Program Goal of MBE, WBE, SBE, DBE = 33%

Actual Achievement to Date = 62%

Phase 2 EEO Workforce Utilization (through April 2017)

Goals: Minority – 22%; Female – 8%

Actual: Total Hours Worked by all Workers to Date – 94,658

Total Hours Worked by All Minorities to Date – 35,724

% of Total Hours Worked by Minorities – 37.74%

Total Hours Worked by All Women to Date – 10,005*

% of Total Hours Worked by Women – 10.57%*

*The Women category includes Caucasian women only. Minority women are counted in the Minority category.

Total Program Goal of Minority and Women Workforce – 30.00%

Actual Achievement Total of Minority and Women Workforce – 48.31%

PLA Litigation

Rochester Careers in Construction, Inc., et al. v. Rochester Joint Schools Construction Board, et al. (Sup. Ct., Monroe County) is an Article 78 proceeding commenced in August 2016 by local labor organizations against the RJSCB and its board members challenging the RJSCB's determination to not adopt a project labor agreement for the Phase II Program. The relief sought by the petitioners is an order requiring the RJSCB to implement a project labor agreement for the Phase II Program. At the outset of the litigation, the court issued an *ex parte* temporary restraining order prohibiting the RJSCB from proceeding with the Phase II Program without a project labor agreement, which temporary restraining order was subsequently modified to allow the RJSCB to perform all Phase II Program pre-construction activities and award construction contracts for that portion of the Phase II Project that is to be financed with the Series 2017 Bonds. The petitioners have since withdrawn their preliminary injunction application and the temporary restraining order has been vacated.

Financial Audit

The RJSCB engaged an independent audit firm to conduct a financial audit and opine on the RJSCB's financial statements for the fiscal year ending June 30, 2016. The audit resulted in a clean opinion by the outside auditors with no material weaknesses or significant deficiencies. The RJSCB has engaged the audit firm for a financial audit and to opine on the RJSCB's financial statements for the fiscal year ending June 30, 2017.

Project Bids and other Contract Awards

In 2016, the RJSCB procured Furniture, Fixtures, & Equipment (FF&E) for the Phase 2 project at Monroe High School. That strategy allowed the RJSCB to take advantage of previous year bid pricing.

The RJSCB engaged the services of a moving company to perform the physical moves during the summer 2016, associated with the School 12 students' move back to their home school and the School 7 relocation into swing space at Jefferson. The RJSCB has also engaged a mover for Summer 2017 for the Children's School of Rochester/School 1 project.

Other Requests for Proposals and Bids

In order to implement the projects included in the Phase 2 Master Plan, starting in 2016 and as necessary throughout the duration of the RSMP, the RJSCB engaged all of the professional service firms and construction contractors necessary to carry out the work of Phase 2. This includes but is not limited to: Legal Services, Independent Compliance Officer, Architects, Construction Managers, Commissioning Consultants, Food Service Consultants, Contractors, Special Inspections and Testing, Environmental Inspections and Testing, Moving Services, etc.

MBE/WBE/SBE/DBE Business Utilization and EEO Compliance

In Phase 2, the goal for Business Utilization has been increased to a combined total of 33% for M/W/S/DBE. The goals for Minority and Women workforce participation (EEO) have also been increased to 22% and 8% respectively.

PROGRAM HIGHLIGHTS

- ✓ 99% of Prime construction contracts have been awarded to Greater Rochester Firms.
- ✓ 94% of Construction and Professional Service contracts have been awarded to Greater Rochester Firms.
- ✓ Of the \$265 million paid to date, 94% stays within the local economy = \$249 million
- ✓ The M/W/S/DBE Business Utilization overall goal of 33% is currently being exceeded by nearly double with 62%. Roughly \$37 million has been subcontracted to M/W/S/DBE firms to date.
- ✓ Workforce Participation goals of 22% minority and 8% women are currently being exceeded with 38% and 10% respectively.
- ✓ Energy savings due to tightened building envelopes and more efficient mechanical and electrical equipment estimated at \$500,000 per year.
- ✓ Upgrading the food service facilities in the Phase 2 projects allows for much healthier food choices.
- ✓ Updates to building sites in Phase 2 will make for safer pedestrian, bus, and car travel.
- ✓ The largest minority-owned architecture firm in the country, Moody Nolan, is lending its talents to two projects in Phase 2.
- ✓ Several Business Opportunity Program participants are already working on RSMP projects.
- ✓ Although technically a Phase 1 project, the former Maynard's facility at 1776 N. Clinton Avenue will be demolished in the Summer of 2017, creating additional playfields for Helen Barrett Montgomery School 50 and improving the overall neighborhood.
- ✓ Contract and RFP language has been standardized and streamlined in Phase 2.

Going Forward, 2017-2018

The RJSCB will continue to work with and support the District on the implementation of the Phase 2 Master Plan. The RJSCB will engage professional service firms as necessary to carry out tasks associated with the Phase 2 projects per the schedule established in the Phase 2 Master Plan.

The following schools will move out of swing space and back into their brand new schools for the 2018-19 school year:

- James Monroe High School
- Virgil Grissom School 7
- John Walton Spencer School 16
- The Children's School of Rochester School 15

It is anticipated that the first Bonds will be sold in August 2017 to finance Phase 2.

Equal Opportunity

As required by the enabling statute, following an extensive RFP and interview process, the RJSCB identified an Independent Compliance Officer ("ICO") in August of 2010. The ICO is a non-voting member of the Board by statute.

Working with the ICO and the Program Manager, the RJSCB established a Preliminary Diversity Plan for the Program which established the Minority and Women Business Utilization goals and Work Force Participation (EEO) goals Phase 2 of the RSMP.

All firms and individuals seeking to participate in the RSMP should be prepared to acknowledge their understanding and support of this social policy and will be expected to demonstrate efforts to solicit the participation of such individuals as partners, associates, and/or employees. In this regard, the RJSCB expects program participants to undertake or continue existing programs to ensure that minority group members and women are afforded equal employment opportunities without discrimination.

The ICO is responsible for all compliance issues related to the Program. The ICO will identify and confirm a subcontractor's certification(s), track the Prime contractor's compliance for both Business Utilization and Workforce Participation, collect reporting data and provide performance reports to the Board on a monthly basis, provide support to M/W/S/DBEs, verify payments to subcontractors, and provide program outreach among other tasks.

In November of 2013, following an RFP and interview process, the RJSCB engaged a third party consultant to review the Program records kept by the then-Phase 1 ICO, Landon & Rian. The consultant, Northeast Preconstruction Ventures Inc. ("NPV"), immediately engaged and began an audit of the ICO records for Phase 1 of the RSMP.

The audit concentrated on the completeness and accuracy of records kept and maintained by the ICO, the effectiveness of the ICO's internal controls, and the subsequent diversity reporting by the ICO to the RJSCB. NPV's work revealed several material weaknesses in the ICO's controls and contains numerous recommendations for eliminating the risk and reoccurrence of these deficiencies.

The RJSCB is committed to the successful implementation of the Diversity Plan through improved performance of the ICO in a manner consistent with the independence of the ICO required by the Legislation. In January 2014, the RJSCB awarded the Phase 1 ICO services contract to Baker Tilly Virchow Krause LLP (Baker Tilly), and in August 2016 it awarded the Phase 2 ICO services contract to Baker Tilly.

Baker Tilly's Role

When a low bidder is identified, Baker Tilly staff examine the bid to ensure that all required documentation is provided, and the Prime Contractor (PC) is educated on the compliance obligations. This includes:

- Ensuring the documentation includes the EBE Utilization Plan (DP-1), EBE Assurance Statement, Promise of Non-Discrimination Checklist and Good Faith Efforts Checklist.
- Verify that the EBE subs listed on the DP-1 have been contacted by the PC in regard to the proposed work scope.
- Verify that the EBE subs are certified for both the work scope and respective EBE goal proposed by the Prime.
- Ensure that if a sub will act as a supplier or broker, the PC understands the correct credit to be received.
- Ensure that Baker Tilly has an understanding of each sub's role, and that each sub is performing a commercially useful function. If there are any issues with the proposed goals or quality of the documentation received, Baker Tilly contacts the PC.
- Offering assistance to any PC having difficulty finding EBE subs in order to meet the goals.
- Assist contractors by providing them electronic templates for the compliance forms, to ensure that the forms are completed in a neat and legible manner.
- Issuing recommendation letters for firms that are determined to have made a good faith effort in meeting all of the business participation goals.
- Once a firm has been awarded a contract, Baker Tilly requests copies of the Letter of Intent to Perform (DP-2) and executed sub-contracts for each EBE sub in order to verify that the PC is starting to fulfill their interest to use the sub.

Ongoing Monitoring Procedures

- On a monthly basis, Baker Tilly collects copies of DP-3s, DP-3As, certified payrolls, proof of payment to EBE subs (and corresponding invoices) and proof of payment toward the RCIC fund. Baker Tilly uses the certified payroll to validate the hours reported on the DP-3 and the proof of payment (with the corresponding invoices) to sub-contracts used to validate the fulfillment of the sub-contract.
- Perform independent verification procedures, which include sending letters to EBE subs to confirm the balance they were paid by a PC as of a specified date, and sending letters to employees to validate their address and hours worked.
- Review the DP-3As for changes to the use of EBE subs, to ensure that if any new sub-contracts are initiated, the sub is certified for both the work scope and respective EBE goal proposed by the PC, and that they will be serving a commercially useful function.
- Utilize the cost reports and payment applications to determine the list of PCs and subs who were active in a given month. Using this information, Baker Tilly builds a monthly checklist of documents that are required. The checklist database allows Baker Tilly to track problems with compliance documents as well as follow up items. Any issues with compliance documents or indications of compliance issues are immediately investigated.
- Provide all PCs with access to a digital library on GoFileRoom to ensure that they have an efficient means of providing Baker Tilly with the compliance documents for their firm and their subs on a timely basis. The system allows Baker Tilly to easily review documents, share documents among interested parties and store documents long-term.
- Review reporting of credit for each PC, and ensure that the EBE credit only includes firms that are certified, and that are performing a role that is eligible for credit. We have ensured that signed and notarized copies of the RSMP's SBE Certification Form is stored electronically on GoFileRoom for all SBE firms that are claiming eligibility for credit.

RJSCB Meetings

The Board conducts its business meetings generally on the first Monday of the month at 4:30 p.m. Meetings are held at the Program offices located at 1776 North Clinton Avenue, Rochester NY 14621. For scheduling, agendas, minutes and other details, visit the Board's website at www.rcsdk12.org/page/706.

Monthly RJSCB business meetings, as well as all Committee meetings, are open to the public. The Board's M/WBE and Services Procurement Committee and the Finance Committee meet each month generally on the Thursday prior to the monthly business meeting. Those meetings take place at 7:30 am and 9:00 am respectively. Please check the website www.rcsdk12.org/page/706 for a complete meeting schedule.

Appendix A

Table of Professional Service Firms, Vendors, and Contractors

Vendors	Description of Services	Firm Location
Program Wide		
Clark Patterson Lee	SEQRA Consulting Service	Rochester Based
Bergmann Associates	Program Assessment	Rochester Based
Bergmann Associates	Program Assessment	Rochester Based
NPV Inc.	Third Party Review Services	Rochester Based
Kaizen Foodservice	Food Service Consulting	Out of Area
Millennium Strategies	District-wide Technology	Out of Area
SWBR Architects	Architectural Master Planning	Rochester Based
Wendel Energy Services	Energy Consultant	Buffalo Based
Harter Secrest	Monthly Project Work	Rochester Based
PHASE 1A Architects and CMs		
CJS Architects	Architect Services - Charlotte	Rochester Based
Clark Patterson Lee	Architect Services - School 50	Rochester Based
JCJ Architecture	Architect Services - School 58	Out of Area
LaBella Associates, P.C.	Architect Services - School 28	Rochester Based
SWBR Architects	Architect Services - School 17	Rochester Based
Young + Wright Architects	Architect Services - Franklin + Aud	Buffalo Based
LeChase Construction	CM Services (28 and 58)	Rochester Based
The Pike Company	CM Services (17 and 50)	Rochester Based
Campus Construction	CM Servs (Charlotte & Franklin)	Rochester Based
Other Professional Services		
Seeler Engineering	PLA Study	Rochester Based
LaBella Associates	Comm. Agent (17, 58, Monroe)	Rochester Based
Hunt Engineers	Comm. Agent (28, 50, Edison)	Rochester Based
Erdman Anthony	Comm Agent (5, 12, Char, Frank)	Rochester Based
Landon & Rian	ICO (Stage 2)	Rochester Based
Freed Maxick	Audit	Rochester Based
Baker Tilly	ICO (balance of Phase 1)	Out of Area
OSO Inc.	Env. Monitoring (1A)	Rochester Based
OSO Inc.	Env. Monitoring (1B)	Rochester Based
Lawley Services	Ins. & Bond Review	Rochester Based
Main-Ford General Supply	Kitchen Equipment (1a)	Rochester Based
Main-Ford General Supply	Kitchen Equipment (1b)	Rochester Based
Charlotte Appliance	Small Appliances	Rochester Based
Appliance Associates of Buffalo	Small Appliances (1b)	Buffalo Based
Buffalo Hotel Supply	Serving line @ Franklin Swing Space	Buffalo Based
zSpace Inc.	STEM Lab Workstations	Out of Area
School Specialty	FF&E (17/50/Char)	Rochester Based
Facilities Equip & Services	FF&E (17/50/Char)	Rochester Based
FM Resources	FF&E (17/50/Char)	Rochester Based
Hertz Furniture	FF&E (17/50/Char)	Out of Area

Rochester Joint Schools Construction Board Annual Report Fiscal Year 2016-17

ProMaxima	Fitness Equipment	Out of Area
School Specialty	FF&E (5, 28, 58, Edison)	Rochester Based
Facilities Equip & Services	FF&E (5, 28, 58, Edison)	Rochester Based
FM Resources / Office	FF&E (5, 28, 58, Edison)	Rochester Based
Hertz Furniture	FF&E (5, 28, 58, Edison)	Out of Area
Uline	mobile organizer school 58	Out of Area
Crowd control warehouse	58 security barriers	Out of Area
Meadows Office Furn	FF&E	Rochester Based
JSJ/Sedgwick Business Int.	FF&E	Rochester Based
Quality Office / Krueger	FF&E	Rochester Based
Hertz Furniture	AV Carts	Out of Area
School Specialty	Butcher Block Tables	Rochester Based
Professional Furn & Eq.	Mezzanine Seating	Out of Area
School Specialty	wooden lockers	Rochester Based
Accent Woodworks	IT cabinets	Rochester Based
FES	School 58 Bleachers	Rochester Based
SJB Services	Special Inspections / Testing (1A)	Rochester Based
SJB Services	Special Inspections / Testing (1B)	Rochester Based
JT Securities	Security Services (17/50/58)	Rochester Based
AP Safety and Security	Security Services (5/28/Edison)	Rochester Based
AP Safety and Security	Security Services (School 12) Monroe extension	Rochester Based
Lafayette Storage & Moving	Moving Services	Rochester Based
FM Office Express	Moving Services	Rochester Based
Corrigan Moving	Moving Services	Rochester Based
MDI	Moving Services	Rochester Based
CCP	Pre-Apprenticeship Program	Out of Area
Corrigan Moving	Moving Services 1B	Rochester Based
Clark Moving	Moving Services 1B	Rochester Based
FM Office Express / Merkle	Moving Services 1B	Rochester Based
FM Office Express / Merkle	Moving Services 1c	Rochester Based
Pacific Scientific Transport	Chemical Moves (Monroe)	Out of Area
Nickerson Corp	School 12 FF&E	Rochester Based
FM Resources	School 12 FF&E	Rochester Based
FES	School 12 FF&E	Rochester Based
Hertz Furniture	School 12 FF&E	Out of Area
WB Mason	School 12 FF&E	Out of Area
FES	Additional FF&E School 12	Rochester Based
Clark Moving	School 12 move	Rochester Based
Vargas Associates	Move Manager	Rochester Based
PHASE 1B Architects and CMs		
CJS Architects	Architect Services - Monroe	Rochester Based
Young & Wright Architects	Architect Services - School 5	Buffalo Based
LaBella Associates	Architect Services - Edison	Rochester Based
SEI Design Group	Architect Services - School 12	Rochester Based

Rochester Joint Schools Construction Board Annual Report Fiscal Year 2016-17

Cannon Design	Architect Services - East	Buffalo Based
SEI Design Group	Architect Services - Jefferson	Rochester Based
Pike	CM Services - School 5 and 12	Rochester Based
Campus	CM Services - Monroe	Rochester Based
LPCiminelli	CM Services - East and Edison	Buffalo Based

Construction Contracts

Hewitt Young Electric	DWT 1a	Rochester Based
TEQ	Interactive White Boards	Out of Area
Ronco	Network Electronics	Rochester Based
ICS Telecom	Handsets	Rochester Based
Hewitt Young Electric	DWT 1b	Rochester Based
Ronco	Interactive White Boards	Rochester Based
Dyntek	Network Electronics	Out of Area
Fronrunner Networks	Handsets	Rochester Based
Dyntek	Network Electronics	Out of Area
Fronrunner Networks	DWT - School 12 handsets	Rochester Based
TEQ	Interactive White Boards	Out of Area
Day Automation	School 12 Building Controls	Rochester Based
Day Automation	Monroe Building Controls	Rochester Based
Day Automation	Monroe Access Controls	Rochester Based
Day Automation	East (summer) Building Controls	Rochester Based
Day Automation	East (summer) Access Controls	Rochester Based
Day Automation	East (summer) additional Access Controls	Rochester Based
Manning Squires Hennig	School 58 GC	Rochester Based
Leo J. Roth	School 58 - Mech	Rochester Based
Eastcoast Electric	School 58	Rochester Based
M. A. Ferraulio	School 58 - Plum	Rochester Based
Manning Squires Hennig	School 28	Rochester Based
Bell Mechanical	School 28 - Mech	Rochester Based
Nairy Mechanical	School 28 - Plumb	Rochester Based
Kaplan Schmidt	School 28	Rochester Based
Manning Squires Hennig	School 50	Rochester Based
B&B Mechanical	School 50 - Mech	Rochester Based
Eastcost Electric	School 50	Rochester Based
Thurston Dudek	School 50 - Plumb	Rochester Based
Manning Squires Hennig	School 17	Rochester Based
Testa Construction	School 17 - Clinic GC	Rochester Based
M. A. Ferraulio	School 17 - Mech	Rochester Based
Eastcoast Electric	School 17	Rochester Based
M. A. Ferraulio	School 17 - Plumb	Rochester Based
The Pike Company	Charlotte	Rochester Based
M. A. Ferraulio	Charlotte - Mech	Rochester Based
Concord Electric	Charlotte	Rochester Based
Thurston Dudek	Charlotte - Plumb	Rochester Based
The Pike Company	East	Rochester Based
DiFiore Construction	East Field	Rochester Based
Steve General	East - Summer Project	Rochester Based
LeChase Construction	School 5	Rochester Based

Rochester Joint Schools Construction Board Annual Report Fiscal Year 2016-17

Bell Mechanical	School 5 - Mech	Rochester Based
Kaplan Schmidt	School 5	Rochester Based
Thurston Dudek	School 5 - Plumb	Rochester Based
Steve General	School 5 - Roofing	Rochester Based
The Pike Company	Edison	Rochester Based
Landry Mechanical	Edison	Rochester Based
MA Ferrauilo	Edison-plumb	Rochester Based
Hewitt Young	Edison	Rochester Based
Steve General	Franklin Aud	Rochester Based
Kaplan Schmidt	Franklin Aud	Rochester Based
MA Ferrauilo	Franklin Aud	Rochester Based
Steve General	Franklin Aud Roof	Rochester Based
Mark Cerrone Inc.	School 12 (abatement/demo)	Buffalo Based
LeChase Construction	School 12	Rochester Based
Landry Mechanical	School 12	Rochester Based
Hewitt Young	School 12	Rochester Based
MA Ferrauilo	School 12	Rochester Based
Steve General	Jefferson	Rochester Based
MA Ferrauilo	Jefferson	Rochester Based
Manning Squires Hennig	Monroe	Rochester Based
MA Ferrauilo	Monroe - Mech	Rochester Based
Thurston-Dudek	Monroe - Plum	Rochester Based
Eastcoast Electric	Monroe	Rochester Based
Cucchiara	Franklin	Rochester Based
Leo J. Roth	Franklin - Mech	Rochester Based
Kaplan Schmidt	Franklin	Rochester Based
Thurston Dudek	Franklin	Rochester Based

Appendix A, continued

Phase 2

Table of Professional Service Firms, Vendors, and Contractors

Vendor	Description of Services	Firm Location
CJS	Architect Monroe High School	Rochester Based
Clark Patterson Lee	SEQRA, Architect SWW and School 2	Rochester Based
Seeler Engineering	PLA Study	Rochester Based
Cannon Design	Architect East	Buffalo Based
SEI Design	Architect School 7	Rochester Based
SWBR	Architect School 16	Rochester Based
Clark Moving & Storage	Moving Services - School 7	Rochester Based
Moody Nolan	Architect, CSR and School 6	Out of Area
The Pike Company	CM, several projects	Rochester Based
AP Safety and Security	Site Security, several projects	Rochester Based
Armor Security	Site Security, Edison	Rochester Based

Rochester Joint Schools Construction Board Annual Report Fiscal Year 2016-17

Executive Investigation	Site Security, School 1	Buffalo Based
LeChase Construction	CM, Schools 7 and 10	Rochester Based
LPCiminelli	CM, several projects	Buffalo Based
SJB Services, Inc.	MT&SI	Rochester Based
Terracon	MT&SI	Rochester Based
Fisher Associates	Environmental Testing	Rochester Based
LaBella Associaties	Environmental Testing, Edison Architect	Rochester Based
Watts Engineers	Architect, Dr. Freddie Thomas	Buffalo Based
MEH	Environmental Testing, School 7	Rochester Based
Kaizen	Food Service Consultant, Phase 2	Out of Area
Erdman Anthony	Commissioning	Rochester Based
Eastcoast Electric	Electric prime, several projects	Rochester Based
Millenium Strategies	District Wide Technology Consultant	Out of Area
Foit Albert Associates	Design Standards Guide Consultant	Buffalo Based
Manning Squires Hennig	General Contractor, Monroe	Rochester Based
Michael A. Ferraulo	Plumbing Contractor, Monroe	Rochester Based
Fibertech	Abatement Contractor, several projects	Rochester Based
Mark Cerrone, Inc.	Demolition Contractor, several projects	Rochester Based
Lawley Services	Insurance	Buffalo Based
Cannon Design	Architect, East HS	Buffalo Based
Flood & Flood	Photography Services	Rochester Based
LandonPR	Public Relations, BOP	Rochester Based

Appendix B

Swing Space Allocations

The RJSCB is working with the RCSD and the City of Rochester to identify the swing space available to be used so that Phase 2 remains on schedule.

Appendix C

Table of Phase 1 Estimated Construction Cost and Anticipated State Aid

This table is updated monthly to track project costs in real time for the duration of the project.

PROGRAM SUMMARY (5/24/17)									
#	ITEMS	PHASE 1A PROJECTS							SUBTOTALS 1A
		DWT-1	17	17 EPC	50-A	58	CHARLOTTE	FRANKLIN	
1	CONSTRUCTION BUDGETS	\$ 5,013,902	\$ 23,491,963	\$ 25,525	\$ 19,137,700	\$ 36,643,146	\$ 23,502,060	\$ 9,215,917	\$ 117,030,212
2	INCIDENTAL BUDGETS	\$ 15,342,150	\$ 4,263,032	\$ -	\$ 3,316,535	\$ 6,215,097	\$ 3,866,197	\$ 1,719,249	\$ 34,722,259
3	CAPITALIZED INTEREST	\$ 1,135,930	\$ 833,811	\$ 115	\$ 902,449	\$ 1,497,848	\$ 1,177,234	\$ 370,242	\$ 5,917,628
4	PHASE 1A PROJECT CONTINGENCY	\$ -	\$ -	\$ -	\$ -	\$ -	\$ 22,231	\$ -	\$ 22,231
6	COMPLETED COST	\$ 21,491,981	\$ 28,588,806	\$ 25,640	\$ 23,356,683	\$ 44,356,091	\$ 28,545,491	\$ 11,305,408	\$ 157,670,100
7	ESTIMATED STATE BUILDING AID	\$ 20,356,052	\$ 19,702,320	\$ 25,128	\$ 18,186,090	\$ 22,509,762	\$ 27,368,257	\$ 10,935,166	\$ 119,082,774
8	ESTIMATED EXCEL FUNDING	\$ 338,101	\$ 6,727,855	\$ -	\$ 2,438,524	\$ 6,206,071	\$ 505,790	\$ 115,784	\$ 16,332,125
9	ESTIMATED TOTAL STATE AID	\$ 20,694,153	\$ 26,430,175	\$ 25,128	\$ 20,624,614	\$ 28,715,833	\$ 27,874,047	\$ 11,050,950	\$ 135,414,899

#	ITEMS	PHASE 1B PROJECTS					SUBTOTALS 1B
		DWT-2	5	28	EAST	EDISON	
1	CONSTRUCTION BUDGET	\$ 3,063,587	\$ 17,100,500	\$ 18,565,385	\$ 12,575,269	\$ 21,114,409	\$ 72,419,150
2	INCIDENTAL BUDGET	\$ 13,417,241	\$ 3,214,829	\$ 3,885,334	\$ 5,223,161	\$ 3,811,708	\$ 29,552,272
3	CAPITALIZED INTEREST	\$ 938,934	\$ 1,225,491	\$ 1,369,019	\$ 1,063,586	\$ 1,507,917	\$ 6,104,947
4	PHASE 1B PROJECT CONTINGENCY	\$ (0)	\$ -	\$ -	\$ -	\$ 0	\$ 0
6	COMPLETED COST	\$ 17,419,762	\$ 21,540,820	\$ 23,819,739	\$ 18,862,015	\$ 26,434,033	\$ 108,076,369
7	ESTIMATED TOTAL STATE AID	\$ 16,480,828	\$ 19,794,765	\$ 20,236,558	\$ 17,798,430	\$ 24,926,116	\$ 99,236,697

#	ITEMS	PHASE 1C PROJECTS				SUBTOTALS 1C
		12	MONROE	JEFFERSON	50-B	
1	CONSTRUCTION BUDGET	\$ 20,083,696	\$ 24,041,194	\$ 277,469	\$ 2,600,000	\$ 47,002,360
2	INCIDENTAL BUDGET	\$ 3,905,899	\$ 4,218,444	\$ 46,211	\$ 808,286	\$ 8,978,840
3	CAPITALIZED INTEREST	\$ 1,494,503	\$ 1,603,718	\$ 20,139	\$ 52,468	\$ 3,170,828
4	PHASE 1C PROJECT CONTINGENCY	\$ 0	\$ 100,000	\$ -	\$ 400,000	\$ 500,000
	PENDING CHANGES	\$ 118,790	\$ 66,505	\$ -	\$ -	\$ 185,295
6	COST TO COMPLETE	\$ 25,484,098	\$ 29,863,356	\$ 343,819	\$ 3,408,286	\$ 59,099,559
7	ESTIMATED TOTAL STATE AID	\$ 21,485,253	\$ 28,259,638	\$ 323,681	\$ 3,294,786	\$ 53,363,358

Please note:

The amount above MCA does not represent the "local share"

"Local share" is the difference between the annual debt service and the annual state aid

See Table of Debt Service v. Anticipated State Aid Reimbursement

Appendix D

Table of Debt Service and Anticipated State Aid Reimbursement, Phase 1

ROCHESTER JOINT SCHOOLS CONSTRUCTION BOARD
Facilities Modernization Program [Phase I]
 COMIDA Series 2012, 2013 and 2015 Financings

Annual Net Debt Service vs. Annual Building Aid

Fiscal Year	Annual Aggregate Net Debt Service (1)	Annual Aggregate Building Aid (2)	DISTRICT SHARE Annual Difference	Sources of Local Share		Net Annual Difference
				Annual Energy Savings (3)	School District Local Share Funding	
2013	0	0	-		0	
2014	5,004,182	6,686,636	1,682,454	6,883	0	1,689,337
2015	15,695,428	16,757,943	1,062,514	153,121	0	1,215,636
2016	19,831,092	16,758,823	(3,072,269)	378,410	2,693,859	0
2017	23,857,946	21,105,845	(2,752,101)	389,762	2,362,338	0
2018	23,873,196	21,105,845	(2,767,351)	401,455	2,365,896	0
2019	23,896,946	21,105,845	(2,791,101)	413,499	2,377,602	0
2020	23,916,946	21,105,845	(2,811,101)	425,904	2,385,197	0
2021	23,936,446	21,105,845	(2,830,601)	438,681	2,391,920	0
2022	23,843,446	21,105,845	(2,737,601)	451,841	2,285,759	0
2023	23,757,446	21,105,845	(2,651,601)	465,397	2,186,204	0
2024	23,770,196	21,105,845	(2,664,351)	479,359	2,184,992	0
2025	23,786,446	21,105,845	(2,680,601)	493,739	2,186,861	0
2026	23,799,696	21,105,845	(2,693,851)	508,552	2,185,299	0
2027	23,813,696	21,105,845	(2,707,851)	523,808	2,184,043	0
2028	26,246,946	21,105,845	(5,141,101)	539,522	4,601,578	0
2029	16,323,500	14,419,209	(1,904,291)	555,708	1,348,583	0
2030	5,123,500	4,347,903	(775,598)	572,379	203,218	0
2031	4,950,750	4,347,022	(603,728)	589,551	14,177	0
2032	0		-	607,237	0	607,237
2033	0		-	625,454	0	625,454
2034	0		-	631,786	0	631,786
2035	0		-	386,990	0	386,990
	0		-		0	0
	355,427,802	316,587,675	(38,840,127)	10,039,041	33,957,527	3,467,104
		316,587,675	38,840,127			

Assumed AMORTIZATION Interest Rates Summary			
	Un-Rounded NIC	Rounded NIC	
Series 2012	0.664802%	0.625%	0.625%
Series 2013	3.387610%	3.375%	3.375%
Series 2015	3.029742%	3.000%	3.000%

(1) Aggregate annual debt service, net of capitalized interest, for Series 2012, 2013 and 2015 bonds. (provided by CitiGroup)

(2) Aggregate building aid for all projects calculated at the actual interest rates summarized above, using estimated final costs provided by RSJCB.

Appendix D

Table of Debt Service and Anticipated State Aid Reimbursement, Phase 2

ROCHESTER JOINT SCHOOLS CONSTRUCTION BOARD Facilities Modernization Program [Phase II]

Annual Net Debt Service vs. Annual Building Aid

Fiscal Year	Annual Aggregate Net Debt Service (1)	Annual Aggregate Building Aid (2)	DISTRICT SHARE Annual Difference
2017	0	0	-
2018	4,527,942	4,419,649	(108,293)
2019	26,352,194	25,725,849	(626,345)
2020	35,448,722	34,608,332	(840,390)
2021	35,446,750	34,608,332	(838,418)
2022	37,528,750	36,638,897	(889,853)
2023	37,527,500	36,638,897	(888,603)
2024	37,529,750	36,638,897	(890,853)
2025	37,527,750	36,638,897	(888,853)
2026	37,529,000	36,638,897	(890,103)
2027	37,525,500	36,638,897	(886,603)
2028	37,529,500	36,638,897	(890,603)
2029	37,527,500	36,638,897	(888,603)
2030	37,526,500	36,638,897	(887,603)
2031	37,528,000	36,638,897	(889,103)
2032	37,528,250	36,638,897	(889,353)
2033	32,998,500	32,219,248	(779,252)
2034	11,176,250	10,913,048	(263,202)
2035	2,078,250	2,030,565	(47,685)
2036	2,079,000	2,030,565	(48,435)
	562,915,608	549,583,455	(13,332,153)
	562,915,608	549,583,455	13,332,153

Assumed AMORTIZATION Interest Rates Summary			
	Un-Rounded NIC	Rounded NIC	
Phase II-A	3.622000%	3.625%	
Phase II-B	3.604751%	3.625%	
Phase II-C	3.669789%	3.625%	
Phase II-D	3.768108%	3.750%	

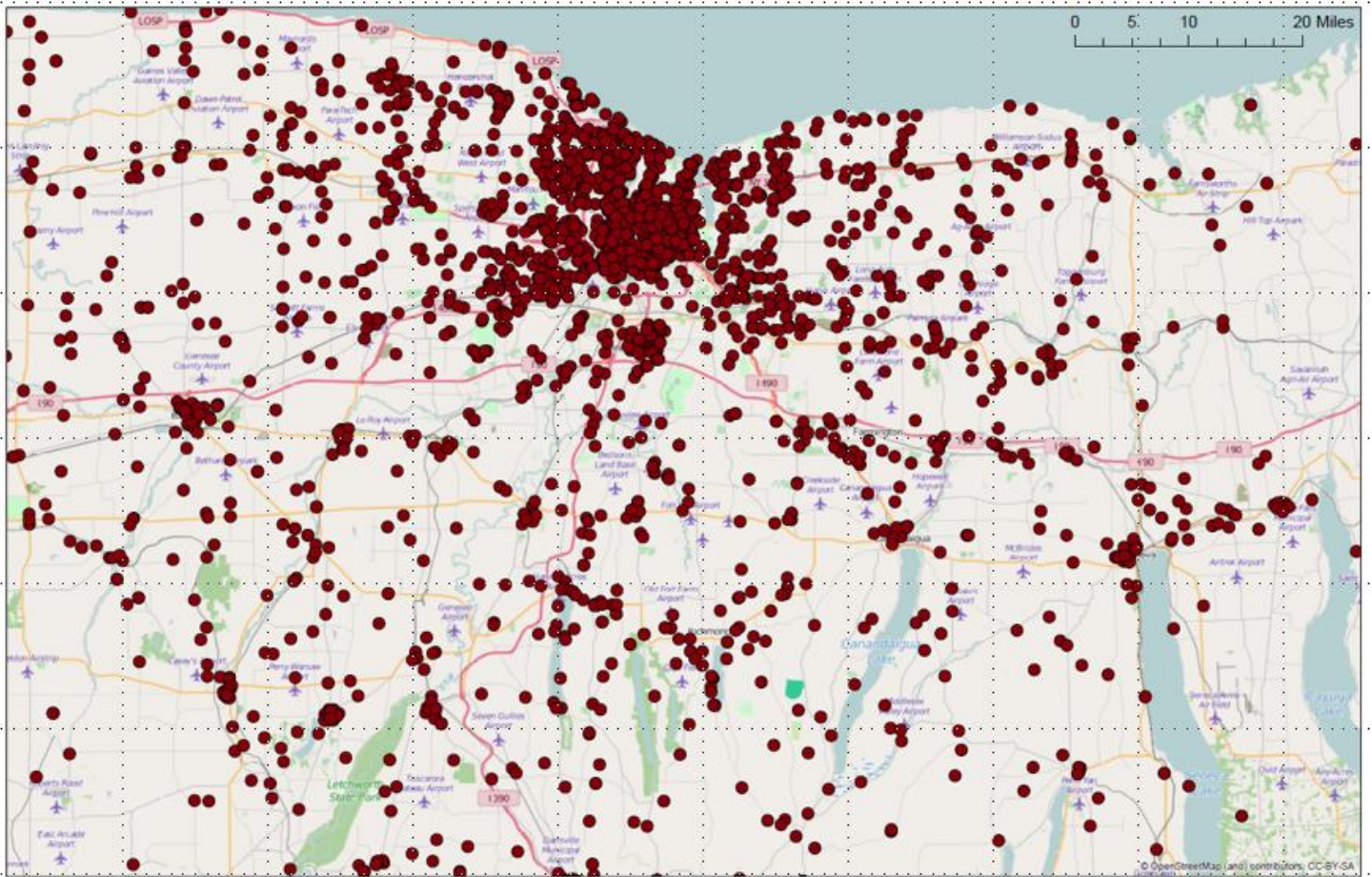
(1) Aggregate annual debt service, including capitalized interest, for Phase II-A, Phase II-B, Phase II-C, and Phase II-D bonds.
(provided by CitiGroup)

(2) Aggregate building aid including aid for capitalized interest for all projects calculated at the actual interest rates summarized above, using estimated final costs provided by RSJCB.

The local share for the project is calculated based on the debt service payments vs. state aid reimbursement

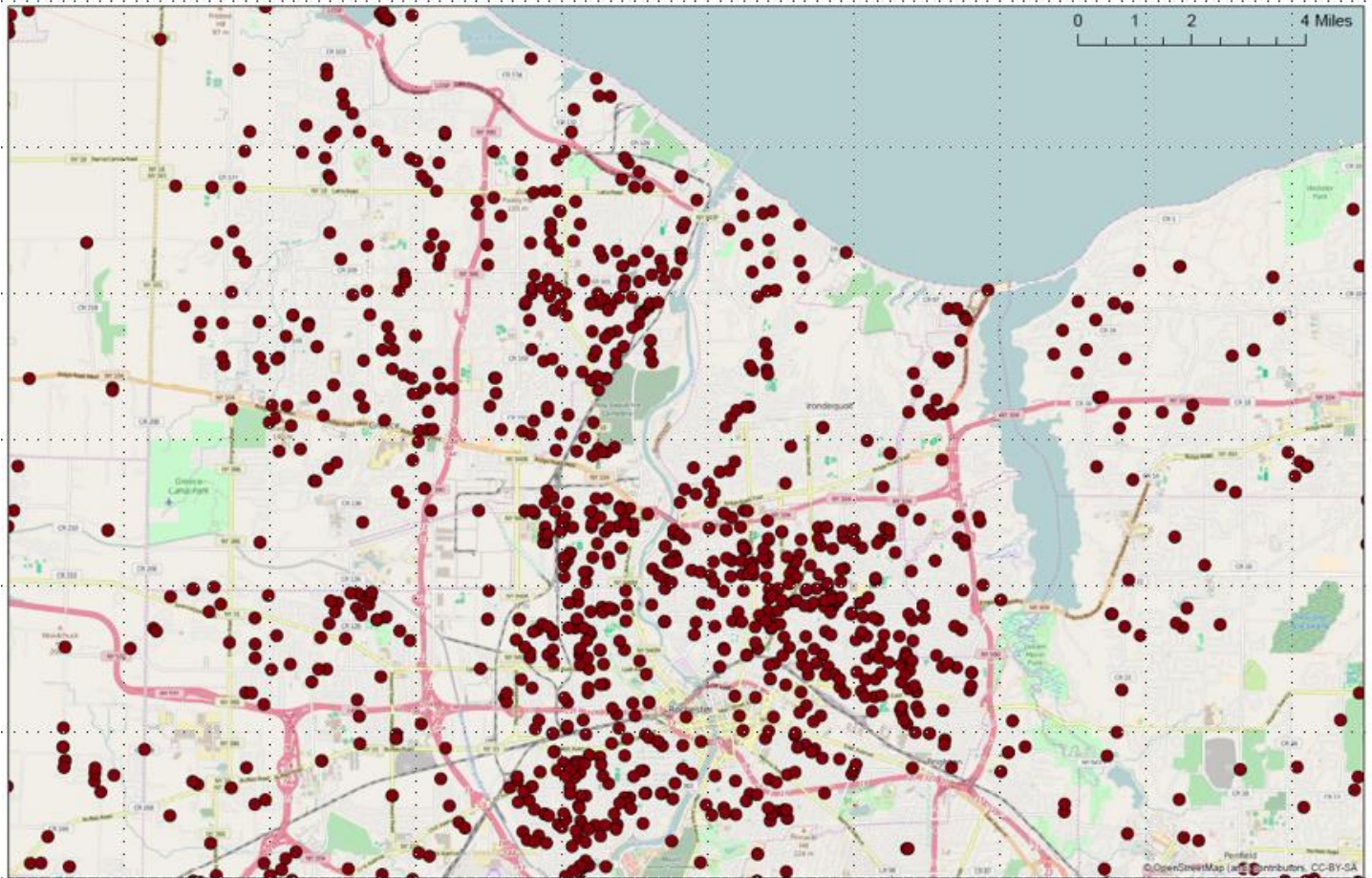
Appendix E

Geographical Display of Workforce, All Labor, by Location



Appendix E

Geographical Display of Workforce, All Labor, Greater Rochester Area



Appendix F

Table of MBE/WBE/SBE/DBE Subcontractor Firms (Phase 1)

Contractor	MBE	WBE	SBE	DBE
106 Enterprises			SBE	
5 Star Restoration			SBE	
7Gens (SCMC LLC)	MBE			
ABR Wholesalers		WBE		
Adonis Construction	MBE			
Akwasne Construction	MBE		SBE	DBE
A-M Electrical, Inc.	MBE			
American Janitor Service			SBE	
AP Safety and Security Corp.		WBE		
Apex Enterprises LLC	MBE			
Architectura PC		WBE	SBE	
ArchStetics Architecture			SBE	
ASA Contractors			SBE	
Atlantic Glass	MBE			
Beaver Creek Industries			SBE	
Bethany Technologies		WBE		
Bolton Surveying			SBE	
Brooks Brothers Painting of Rochester Inc.	MBE			
BSV Enterprises	MBE			DBE
Building Energy Solutions		WBE		
CanAm Environmental Safety, Inc.			SBE	
Cannon & Noto Enterprise	MBE		SBE	
Cannon Electric	MBE			
Cardwell Construction			SBE	
Carney Electrical & Industrial Supplies, LLC	MBE			
Casarsa Construction Supply			SBE	
Chait Studios			SBE	
CHC Construction	MBE			
Chenango Contracting, Inc.	MBE			
CID Coatings			SBE	
City Electric Company Inc.		WBE		DBE
Clark Moving & Storage		WBE		
Coldwater Insulation		WBE	SBE	
Compliance & Administrative Services of NY	MBE	WBE		
Comprehensive Employee Management	MBE			
Construction Cost Services, Inc.	MBE			
Convergent Technologies		WBE		
Cooper Sign Company	MBE			
Cornerstone Training Institute			SBE	
Crosby Brownlee		WBE		
Cummings Construction	MBE			
Dataflow Reprographics, Inc.		WBE		
DDT Construction			SBE	
Deborah Jean		WBE		
Decca Paving	MBE			DBE
DeClerck Flooring Inc.			SBE	
Design Services, Inc.				DBE
Downey-Goodlein Elevator Corp.		WBE		

Rochester Joint Schools Construction Board Annual Report Fiscal Year 2016-17

Dwyer Architectural		WBE		
Edge-Global Technology Solutions			SBE	
English Trucking	MBE			
Environmental Design & Research P.C.		WBE		
Existing Conditions Surveys		WBE		
Firestop Technologies			SBE	
Fisher Associates		WBE		
Flower City Monitors Service	MBE			
Foundation Design			SBE	
Foxwise USA	MBE			
G & J Contracting	MBE			DBE
Garden Grove			SBE	
Genesee Restoration		WBE		
Gholkar's Incorporated	MBE			
Grayco Corp			SBE	
Gym Equipment & Specialties. of NY Inc.			SBE	
Heather Demoras Design		WBE		
Herline Technologies		WBE		
Herman HVAC Products			SBE	
Home Guard Enviromental	MBE			
I.C. Construction Services	MBE			
Indoor Air Technologies		WBE		
Indoor Environmental Air Specialists			SBE	
Installrite Systems			SBE	
Interior Movers			SBE	
Interior Moving Service			SBE	
Invictus Electrical, LLC			SBE	
J&N Computer Services, Inc.		WBE		
Jackson Welding		WBE		
Jaclyn Building Services			SBE	
Jai II, Inc.	MBE			
JC Insulation			SBE	
JC Smith		WBE		DBE
Jemco Water Treatment			SBE	
Jensen / BRV Engineering			SBE	
JHP Industrial Supply Co.	MBE			DBE
Jim White Metal Product			SBE	
John N Sanchez Corporation	MBE			
Journee Construction	MBE		SBE	DBE
Journee Construction - Demo				DBE
Journee Construction-Cut/Patch			SBE	
Journee Construction-Insulation	MBE			
Journee Tech Staffing				DBE
Joy Kuebler Landscape Architect		WBE		
Kenel J Antoine Architect & Associates	MBE			
Killian Inc.		WBE		DBE
Klug Crane & Rigging			SBE	
Kraftwerks		WBE		
Krieg Construction		WBE		
Kris Kimmel Drafting			SBE	
Lakeview Construction			SBE	
Larsen Engineering	MBE			
LDK Engineering		WBE		
Lighthouse Energy, LLC.		WBE		

Rochester Joint Schools Construction Board Annual Report Fiscal Year 2016-17

Lysander Construction, LLC		WBE		
M.A. Architects			SBE	
M.H. General Contracting	MBE			
Mark Cerrone Inc.		WBE		
Martens Janitorial			SBE	
Massive Testing & Balancing			SBE	
MD Office Works	MBE			
ME Holvey Consulting, LLC.			SBE	
Mechanical Testing Inc.		WBE		
Merkel Donohue/FM Office Express	MBE			
MGM Insulation	MBE			
Mid-City Signs		WBE		
Millennium Strategies			SBE	
Minority Material Haulers		WBE	SBE	
MJ Dreher Trucking Inc.		WBE		DBE
MS Unlimited		WBE		DBE
NAIRY Mechanical			SBE	
Nickerson Corporation		WBE		
NPV, Inc.		WBE		
OCM Construction	MBE			DBE
OSO, Inc.	MBE	WBE		DBE
Pathfinder Engineers And Architects		WBE		
Pavilion Drainage	MBE			
PDS Construction		WBE	SBE	
Pipitone Enterprises LLC		WBE		
Popli Design Group	MBE			DBE
Precision Concrete & Masonry Inc.			SBE	
ProCarpet		WBE		
Ram-Tech Engineers	MBE			
RAVI Engineering	MBE			DBE
Razak Associates	MBE			
Redhawk Equipment			SBE	
Re-Entry Data		WBE		
Riccelli Enterprises		WBE		
Roche & Co			SBE	
Rochester Rigging & Erectors				DBE
Rogers Enterprises	MBE		SBE	DBE
Roth Consulting		WBE		
S&W Contracting	MBE	WBE		
Safety Zone Environmental		WBE	SBE	
Safety Zone Ventures				DBE
Savin Engineers	MBE			
Scott Construction	MBE		SBE	
Scott's Unlimited	MBE		SBE	
Shades of Color	MBE	WBE		
Sheen and Shine				DBE
Sienna Envir. Tech		WBE		DBE
Sigma PSI			SBE	
Singleton Construction	MBE			
SLR Contracting & Service Company	MBE			DBE
Spectrum Windows & Walls		WBE		
Spencer Virnoche/Upstate Interiors	MBE			
Steel Tech Fabricator Inc.	MBE			
Steve General Contractors	MBE			

Rochester Joint Schools Construction Board Annual Report Fiscal Year 2016-17

Structural Remediation Services Inc.		WBE	SBE	DBE
Superior Insulation/Williamstown Construction			SBE	
Supreme Quality Painting	MBE			
Susquehanna Sheet Metal Erection Service Inc.		WBE	SBE	
Syracuse Scenery & Stage Lighting Co., Inc.		WBE		
Syrstone		WBE		
Tasteful Connections, Inc.		WBE		
Toscano Clements Taylor		WBE		
Unified Electric	MBE		SBE	
Upstate Interiors	MBE			DBE
Upstate Specialty Coatings, LLC			SBE	
US Ceiling	MBE	WBE		DBE
Uzo 1 International, Ltd.	MBE		SBE	DBE
Vargas Associates		WBE		DBE
Watts Architecture & Engineering	MBE			DBE
Wayside Contractors		WBE		
We're Forms		WBE		
Weydman Electric		WBE		
Williams Doors & Hardware		WBE		
WYCO Mechanical, LLC		WBE		

Table of MBE/WBE/SBE/DBE Subcontractor Firms (Phase 2)

Contractor	MBE	WBE	SBE	DBE
A La Renee Marketing, Inc.			SBE	
Ampie Enterprises Inc.				WBE
AP Safety and Security Corp.				WBE
Bethany Technologies Company LLC				WBE
Cannon & Noto Enterprise Inc.		MBE		
Cannon Electric		MBE		
Coldwater Insulation, Inc.				WBE
Cummings Construction LLC		MBE		
E Plumbing & Piping, Inc.			SBE	WBE
Edge GTS	DBE			
Environmental Des. & Res., Landscape Arch., Eng. & Environmental Services, D.P.C				WBE
Firestop Technologies, Inc.				WBE
Flood And Flood Photography And Videography LLC		MBE		
Flower City Monitoring Services, LTD				WBE
Fran Springer Interiors			SBE	
G & J Contracting, Inc.	DBE			
G.P. Land & Carpet Corp.				WBE
Heaster Building Restoration, Inc.	DBE			
Herline Technologies				WBE
I C Construction Services Inc.		MBE		
Jennings Construction Services LLC		MBE		
Keating Consulting				WBE
Kenel J. Antoine Architect & Associates		MBE		
Kris B. Kimmel Construction Drafting, Inc.			SBE	
LandNPR Productions			SBE	
Mark Cerrone Inc.				WBE
Marten's Janitorial			SBE	
McClain Associates Inc.				WBE

Rochester Joint Schools Construction Board Annual Report Fiscal Year 2016-17

Millennium Strategies			SBE	
MS Unlimited Inc.	DBE			
North Coast Electric			SBE	
NPV Inc.			SBE	
Popli Architecture & Engineering LSPC		MBE		
Razak Associates Architecture Engineering & Land Surveying, PLLC		MBE		
Riccelli Trucking Inc.				WBE
Roger's Enterprises	DBE	MBE	SBE	
Safety Zone Ventures, LLC	DBE			
Savin Engineers PC		MBE		
Scott Construction of Rochester Inc.			SBE	
Steel Tech Fabricator Inc.		MBE		
Steve General Contractors		MBE		
Tasteful Connections Inc.				WBE
Unified Electric		MBE		
Upstate Specialty Coatings			SBE	
US Ceiling Corp		MBE		
Vargas Associates				WBE
W.R. Revels Company		MBE		
Ziske-Kraftwerks Inc.				WBE